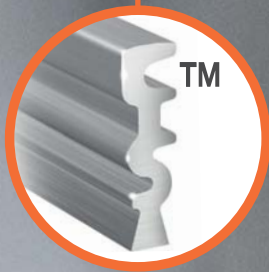




C3000 Cylinders

Protected Key Duplication





Key protected
by 3D Trade Mark



C3000 cylinders



CYLINDER SECURITY

Attack Resistance

- High resistance to “bumping” or percussion thanks to the BKP (Bump Key Power) device.
- High resistance to housebreaking technique: highly effective against wax impression burglary thanks to the BKP device and to the special configuration of the springs.
- Highly drill resistance, thanks to the hardened steel key biting system.
- Push-resistant through the projecting cam.

KEY SECURITY

Key Related Security

- Key protected by 3D Trade Mark for effective protection from illegal key duplication.
- Security Card for authorized key duplication by CISA or CISA authorized centers.
- Over 240.000 possible combinations or different keys.

Master Keying Potential

The 6-pin key biting system offers outstanding access management possibilities. E.g.: 15,000 different cylinders for one master key.

RELIABILITY

Durability

- Tested for over then 100,000 cycles.

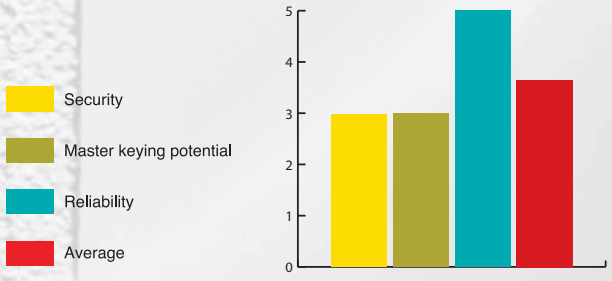
EN 1303: 2005

- Compliant with the European Standard EN 1303: 2005.

Attack Resistance: 0 0

KeyRelatedSecurity: 6 1 2 3 4 5 6

Durability: 6 1 2 3 4 5 6



CERTIFICATIONS

- SKG**

PATENTS

- Key blank protected by 3D Trademark no. 1 236 248 and Community Design no. 2669630
- BKP device: patent no. PCT/WO 2007/074163 A1

APPLICATIONS

C3000 is the product for medium-security applications ideal for apartment buildings. It offers satisfactory master keying potential for companies, shopping malls, universities, hospitals combining strong access management possibilities with control of key duplication.

TECHNICAL FEATURES

Cylinder

- 6 pin key biting system.
- Brass body.
- Brass plugs.
- Self-lubricating DIN sintered steel cam.
- Cemented steel pins.
- Variable shape hardened steel pin drivers.
- Phosphorous bronze and steel springs.

Key

- Paracentral keyway.
- Nickel silver.
- Ergonomic grip head.
- Neck length 12 mm.
- Key numerical coding.
- Key thickness 2.4 mm.
- Depth 0.48 mm.

Finishes



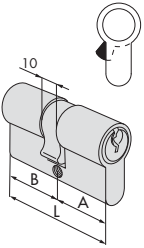
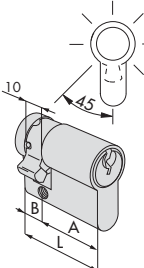
- Standard: nickel plated brass (fin.12).
- On request: sanded brass (fin.00).

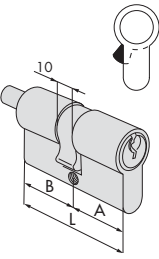
Options on request

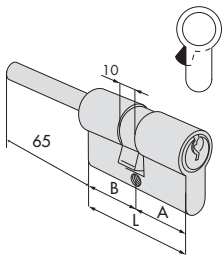
- KA, MK, GMK, CE, CA, PP.

Standard equipment

- 3 keys.
- Security Card.
- Fixing screw.

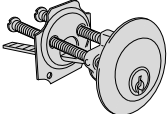
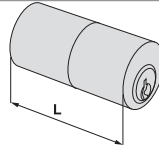
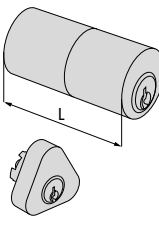
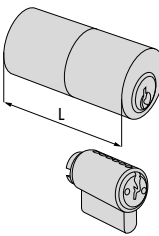
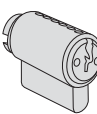
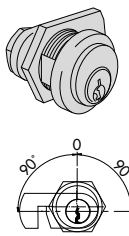
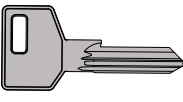
TYPE	DESCRIPTION	COMM. DIM.	L	A	B	PINS	KEY ITEM	 		ITEM				
								UNIT WEIGHT	PIECES	Type	Dim.	Hand	Fin.	Pers.
	<ul style="list-style-type: none"> Double cylinder 	30/30	59.0	29.5	29.5	6	100430 001	0.235	12	1	ON310	07	0	12
		30/35	64.0	29.5	34.5	6	100430 001	0.243	12	1	ON310	26	0	12
		33/33	65.0	32.5	32.5	6	100430 001	0.258	12	1	ON310	10	0	12
		35/35	69.0	34.5	34.5	6	100430 001	0.272	12	1	ON310	13	0	12
		40/30	69.0	39.5	29.5	6	100430 001	0.272	12	1	ON310	12	0	12
		30/45	74.0	29.5	44.5	6	100430 001	0.274	12	1	ON310	27	0	12
		35/40	74.0	34.5	39.5	6	100430 001	0.274	12	1	ON310	28	0	12
		30/50	79.0	29.5	49.5	6	100430 001	0.301	12	1	ON310	17	0	12
		35/45	79.0	34.5	44.5	6	100430 001	0.289	12	1	ON310	19	0	12
		40/40	79.0	39.5	39.5	6	100430 001	0.289	12	1	ON310	18	0	12
		30/55	84.0	29.5	54.5	6	100430 001	0.304	12	1	ON310	33	0	12
		35/50	84.0	34.5	49.5	6	100430 001	0.360	12	1	ON310	31	0	12
		40/45	84.0	39.5	44.5	6	100430 001	0.360	12	1	ON310	30	0	12
		30/60	89.0	29.5	59.5	6	100430 001	0.320	12	1	ON310	20	0	12
		35/55	89.0	34.5	54.5	6	100430 001	0.332	12	1	ON310	32	0	12
		40/50	89.0	39.5	49.5	6	100430 001	0.320	12	1	ON310	21	0	12
		45/45	89.0	44.5	44.5	6	100430 001	0.333	12	1	ON310	29	0	12
		30/65	94.0	29.5	64.5	6	100430 001	0.334	6	1	ON310	41	0	12
		35/60	94.0	34.5	59.5	6	100430 001	0.390	6	1	ON310	38	0	12
		40/55	94.0	39.5	54.5	6	100430 001	0.355	6	1	ON310	42	0	12
		45/50	94.0	44.5	49.5	6	100430 001	0.334	6	1	ON310	39	0	12
		30/70	99.0	29.5	69.5	6	100430 001	0.349	6	1	ON310	24	0	12
		35/65	99.0	34.5	64.5	6	100430 001	0.349	6	1	ON310	22	0	12
		40/60	99.0	39.5	59.5	6	100430 001	0.349	6	1	ON310	25	0	12
		45/55	99.0	44.5	54.5	6	100430 001	0.349	6	1	ON310	43	0	12
		50/50	99.0	49.5	49.5	6	100430 001	0.349	6	1	ON310	23	0	12
		30/75	104.0	29.5	74.5	6	100430 001	0.349	6	1	ON310	56	0	12
		35/70	104.0	34.5	69.5	6	100430 001	0.349	6	1	ON310	49	0	12
		55/50	104.0	54.5	49.5	6	100430 001	0.349	6	1	ON310	64	0	12
		30/80	109.0	29.5	79.5	6	100430 001	0.378	6	1	ON310	37	0	12
		40/70	109.0	39.5	69.5	6	100430 001	0.400	6	1	ON310	35	0	12
		50/60	109.0	49.5	59.5	6	100430 001	0.402	6	1	ON310	36	0	12
		55/55	109.0	54.5	54.5	6	100430 001	0.378	6	1	ON310	70	0	12
50/65	114.0	49.5	64.5	6	100430 001	0.378	6	1	ON310	65	0	12		
55/60	114.0	54.5	59.5	6	100430 001	0.420	6	1	ON310	71	0	12		
40/75	114.0	39.5	74.5	6	100430 001	0.420	6	1	ON310	59	0	12		
30/90	119.0	29.5	89.5	6	100430 001	0.410	6	1	ON310	52	0	12		
40/80	119.0	39.5	79.5	6	100430 001	0.378	6	1	ON310	60	0	12		
60/60	119.0	59.5	59.5	6	100430 001	0.410	6	1	ON310	40	0	12		
	<ul style="list-style-type: none"> Single cylinder with 14 position adjustable cam 	30/10	39.5	29.5	10.0	6	100430 001	0.185	12	1	ON314	02	0	12
		33/10	32.5	29.5	10.0	6	100430 001	0.185	12	1	ON314	09	0	12
		35/10	44.5	34.5	10.0	6	100430 001	0.195	12	1	ON314	07	0	12
		40/10	49.5	39.5	10.0	6	100430 001	0.215	12	1	ON314	03	0	12
		45/10	54.5	44.5	10.0	6	100430 001	0.225	12	1	ON314	08	0	12
		50/10	59.5	49.5	10.0	6	100430 001	0.245	12	1	ON314	04	0	12
		60/10	69.5	59.5	10.0	6	100430 001	0.275	12	1	ON314	05	0	12
70/10	79.5	69.5	10.0	6	100430 001	0.305	12	1	ON314	06	0	12		

TYPE	DESCRIPTION	COMM. DIM.	L	A	B	PINS	KEY ITEM	UNIT WEIGHT	PIECES	ITEM				
										Type	Dim.	Hand	Fin.	Pers. Spec.
	<ul style="list-style-type: none"> Double cylinder pre-set for thumb turn installation On request: Thumb-turn devices items 06353, 06355, 06356, 06357 	30/30	59.0	29.5	29.5	6	100430 001	0.244	12	1	ON312	07	0	12
		30/35	64.0	29.5	34.5	6	100430 001	0.264	12	1	ON312	26	0	12
		35/30	64.0	34.5	29.5	6	100430 001	0.259	12	1	ON312	81	0	12
		33/33	65.0	32.5	32.5	6	100430 001	0.267	12	1	ON312	10	0	12
		30/40	69.0	29.5	39.5	6	100430 001	0.279	12	1	ON312	82	0	12
		35/35	69.0	34.5	34.5	6	100430 001	0.279	12	1	ON312	13	0	12
		40/30	69.0	39.5	29.5	6	100430 001	0.279	12	1	ON312	12	0	12
		35/40	74.0	34.5	39.5	6	100430 001	0.294	12	1	ON312	28	0	12
		30/45	74.0	29.5	44.5	6	100430 001	0.294	12	1	ON312	27	0	12
		40/35	74.0	39.5	34.5	6	100430 001	0.294	12	1	ON312	83	0	12
		45/30	74.0	44.5	29.5	6	100430 001	0.294	12	1	ON312	91	0	12
		30/50	79.0	29.5	49.5	6	100430 001	0.318	6	1	ON312	17	0	12
		35/45	79.0	34.5	44.5	6	100430 001	0.309	6	1	ON312	19	0	12
		40/40	79.0	39.5	39.5	6	100430 001	0.309	6	1	ON312	18	0	12
		45/35	79.0	44.5	34.5	6	100430 001	0.309	6	1	ON312	85	0	12
		40/45	84.0	39.5	44.5	6	100430 001	0.324	6	1	ON312	30	0	12
		45/40	84.0	44.5	39.5	6	100430 001	0.324	6	1	ON312	84	0	12
		30/60	89.0	29.5	59.5	6	100430 001	0.353	6	1	ON312	20	0	12
		40/50	89.0	39.5	49.5	6	100430 001	0.350	6	1	ON312	21	0	12
		45/45	89.0	44.5	44.5	6	100430 001	0.347	6	1	ON312	29	0	12
		40/55	94.0	39.5	54.5	6	100430 001	0.355	6	1	ON312	42	0	12
		55/40	94.0	54.5	39.5	6	100430 001	0.367	6	1	ON312	98	0	12
		45/50	94.0	44.5	49.5	6	100430 001	0.367	6	1	ON312	39	0	12
		40/60	99.0	39.5	59.5	6	100430 001	0.367	6	1	ON312	25	0	12
		45/55	99.0	44.5	54.5	6	100430 001	0.370	6	1	ON312	43	0	12
		50/50	99.0	49.5	49.5	6	100430 001	0.370	6	1	ON312	23	0	12
		45/60	104.0	44.5	59.5	6	100430 001	0.398	6	1	ON312	54	0	12
		55/50	104.0	54.5	49.5	6	100430 001	0.384	6	1	ON312	64	0	12
		30/80	109.0	29.5	79.5	6	100430 001	0.400	6	1	ON312	37	0	12
		40/70	109.0	39.5	69.5	6	100430 001	0.400	6	1	ON312	35	0	12
50/60	109.0	49.5	59.5	6	100430 001	0.400	6	1	ON312	36	0	12		

	<ul style="list-style-type: none"> Double cylinder pre-set for thumb turn installation. Adjustable shaft To install with protective rose item 1.06458.20 On request: Thumb-turn devices items 06353, 06355, 06356, 06357 	30/30	59.0	29.5	29.5	6	100430 001	0.284	6	1	ON317	07	0	12
		35/30	64.0	34.5	29.5	6	100430 001	0.294	6	1	ON317	81	0	12
		40/30	69.0	39.5	29.5	6	100430 001	0.312	6	1	ON317	12	0	12
		45/30	74.0	44.5	29.5	6	100430 001	0.320	6	1	ON317	91	0	12
		50/30	79.0	49.5	29.5	6	100430 001	0.329	6	1	ON317	90	0	12
		55/30	84.0	54.5	29.5	6	100430 001	0.345	6	1	ON317	92	0	12
		60/30	89.0	59.5	29.5	6	100430 001	0.359	6	1	ON317	87	0	12
		65/30	94.0	64.5	29.5	6	100430 001	0.359	6	1	ON317	A3	0	12
		70/30	99.0	69.5	29.5	6	100430 001	0.370	6	1	ON317	88	0	12
		80/30	110.0	79.5	29.5	6	100430 001	0.359	1	1	ON317	93	0	12

C3000 Cylinders

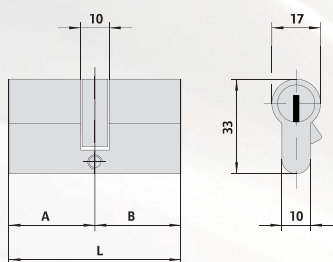


TYPE	DESCRIPTION	FOR LOCK SERIES	L	PINS	KEY ITEM	UNIT WEIGHT kg	PIECES	ITEM				
								Type	Dim.	Hand	Fin.	Pers. Spec.
	<ul style="list-style-type: none"> Cylinder 	1A610, 11610, 50010, 50130, 50180, 50330, 54310, 54315, 54340, 54510, 54550, 54570		6	100430 001	0.204	6	1	0N510	00	0	12
	<ul style="list-style-type: none"> Round cylinder 	1A611, 11611, 50111, 50131, 50181, 50481, 54316, 54341	55	6	100430 001	0.204	6	1	0N210	55	0	12
	<ul style="list-style-type: none"> Pair of cylinders with round external cylinder 	50121, 50126, 50141, 50161, 50171, 50211, 50211, 50221, 50421, 50451, 50471, 50521, 50571	50.0	6	100430 001	0.295	6	1	0N116	00	0	12
		11721, 11921	55.0	6	100430 001	0.295	6	1	0N149	00	0	12
	<ul style="list-style-type: none"> Pair of cylinders with round external cylinder 	1A631, 1A721, 1A731	55.0	6	100430 001	0.295	6	1	0N150	00	0	12
	<ul style="list-style-type: none"> Steel padlock plug 2 keys Pickled brass casing Complete with coupling plate item 1.07573.08.0 			6	100430 001	0.117	6	1	0N610	00	0	
	<ul style="list-style-type: none"> Key extraction to position (0) Deadlock item 1.06414.20.0 or 1.06414.30.0 (to order separately) 		17	6	100430 001	0.117	6	1	0N410	00	0	12
	<ul style="list-style-type: none"> Silver nickel 3D Trademark Paracentral keyway <p>KEY BLANK DISTRIBUTION IS REGULATED BY CONTRACT</p>			6		0.117	50	1	00430	00	1	

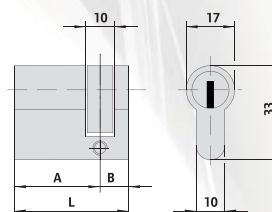
Dimensional drawings



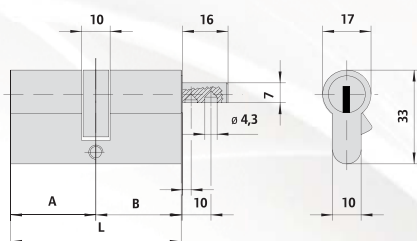
Drawings and dimensions



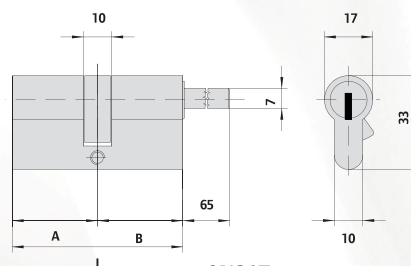
ON310



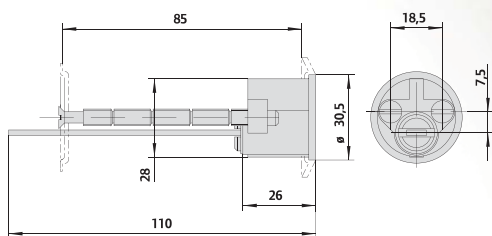
ON314



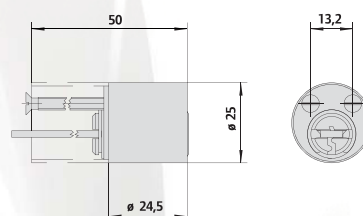
ON312



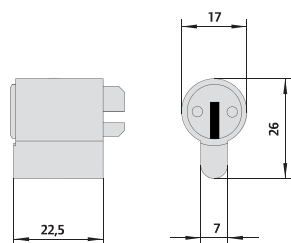
ON317



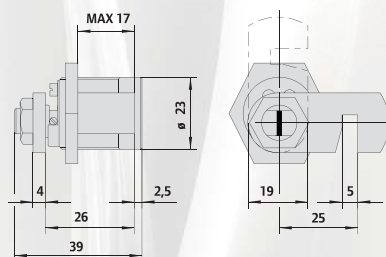
ON510



ON210



ON610



ON410

About Allegion™

Allegion (NYSE: ALLE) is a global pioneer in safety and security, with leading brands like CISA®, Interflex®, LCN®, Schlage® and Von Duprin®. Focusing on security around the door and adjacent areas, Allegion produces a range of solutions for homes, businesses, schools and other institutions. Allegion is a \$2 billion company, with products sold in almost 130 countries.

For more, visit allegion.com

